



KanCare Executive Summary
Committee on HCBS and KanCare Oversight

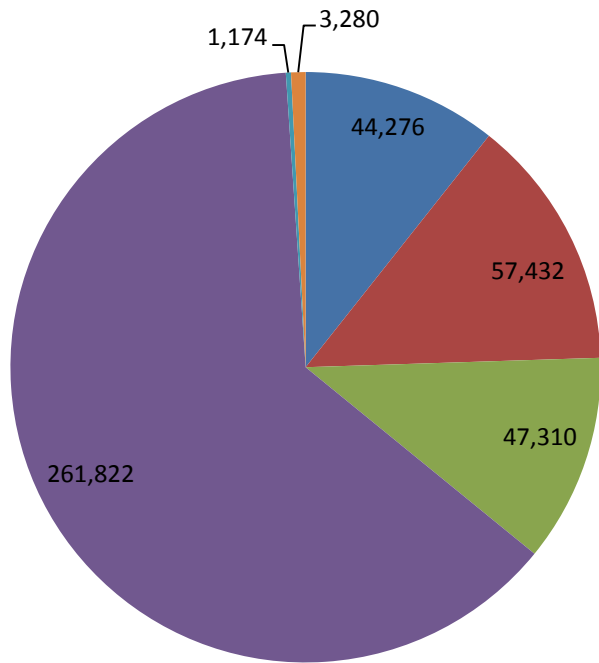
(Data reported through September 2017)

November 28-29, 2017

Medicaid/CHIP Member Eligibility and Expenditures

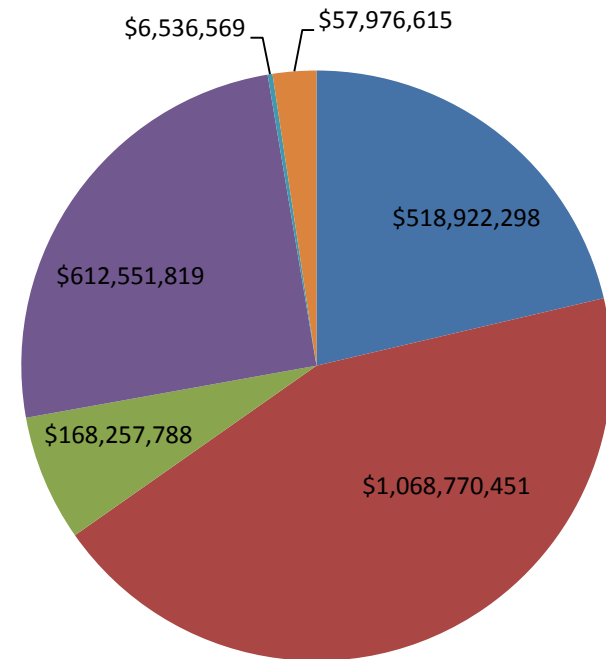
Calendar Year 2017 (January - September)

Eligibility Composition



- Elderly
- Parents/Caretakers
- MediKan
- Individuals with Disabilities
- Children
- Other

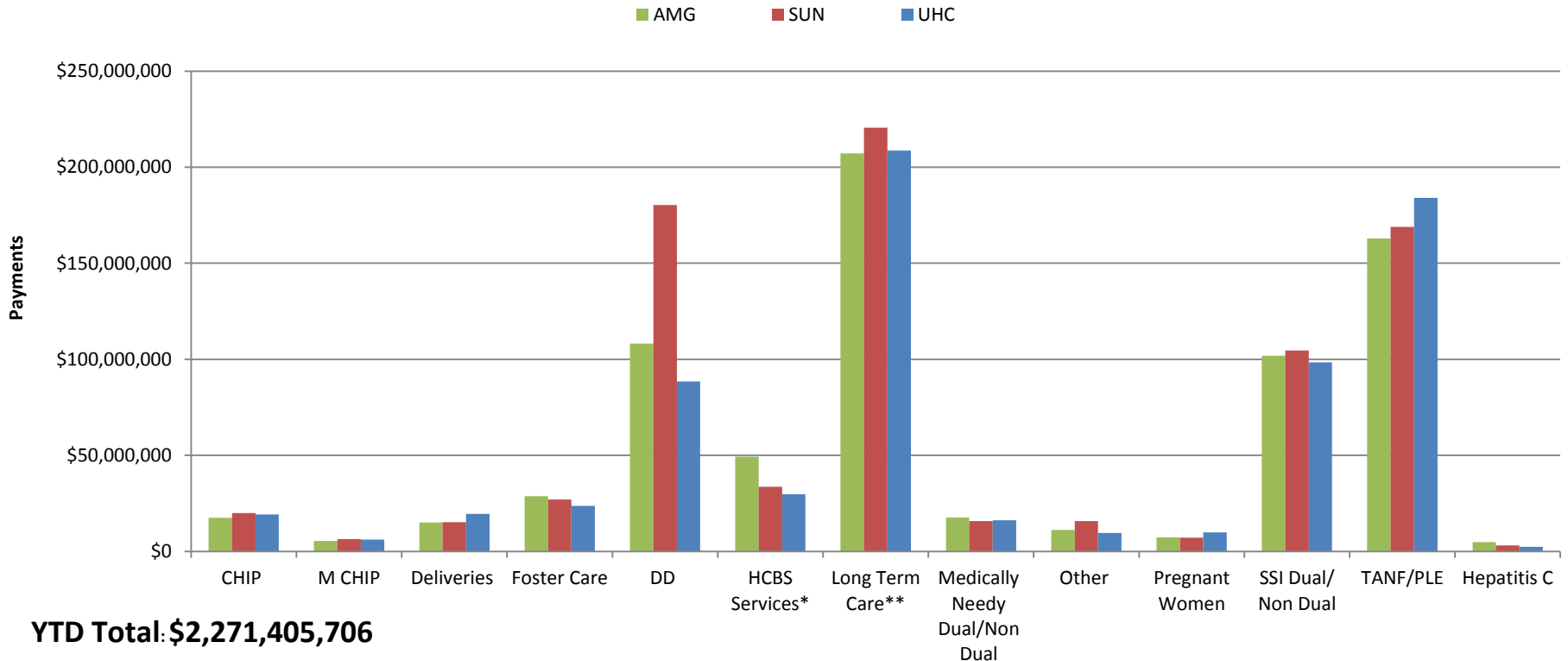
Expenditure Composition



- Elderly
- Parents/Caretakers
- MediKan
- Individuals with Disabilities
- Children
- Other

KanCare Executive Financial Summary

Capitation Payments by Cohort September YTD CY 2017



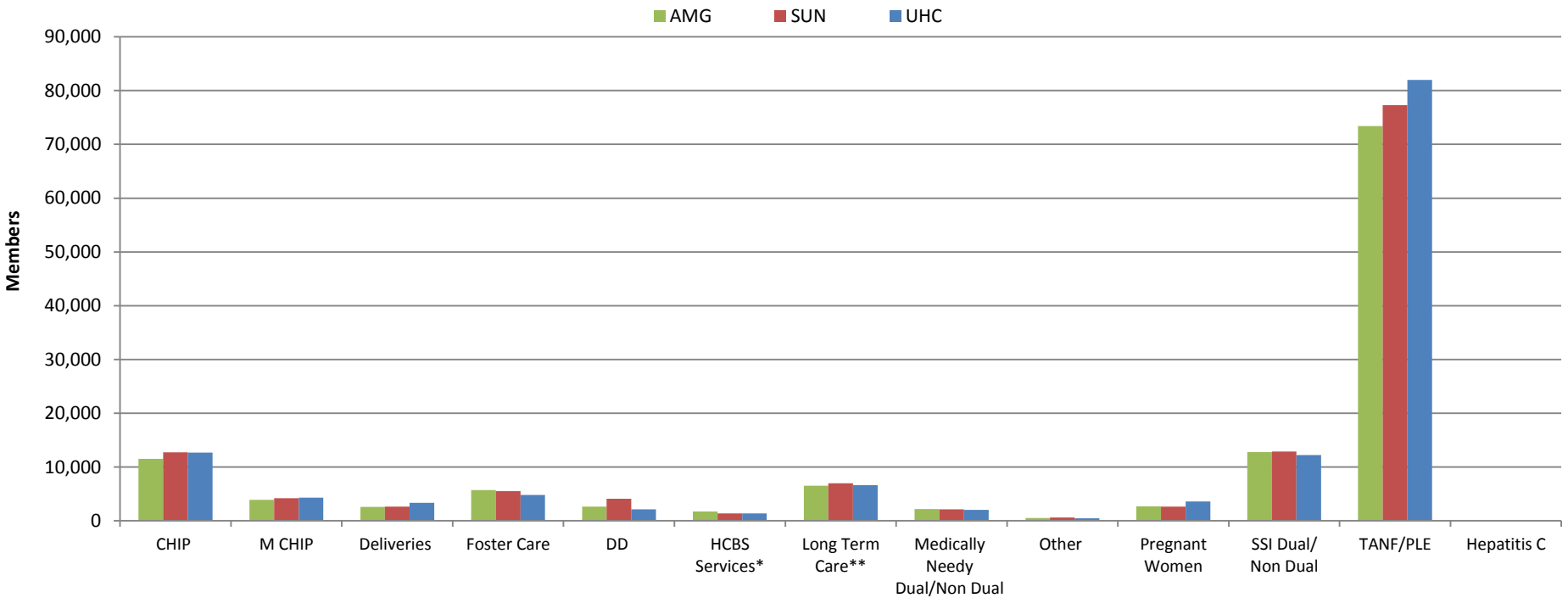
YTD Total: \$2,271,405,706

*HCBS Services includes Autism, Severe Emotional Disturbance, Technology Assisted, and Traumatic Brain Injury

**Long Term Care includes Nursing Facilities, Money Follows the Person Frail Elderly and Physically Disabled, and the Physically Disabled and Frail Elderly Waivers

KanCare Executive Financial Summary

Members by Cohort September YTD CY 2017



*HCBS Services includes Autism, Severe Emotional Disturbance, Technology Assisted, and Traumatic Brain Injury

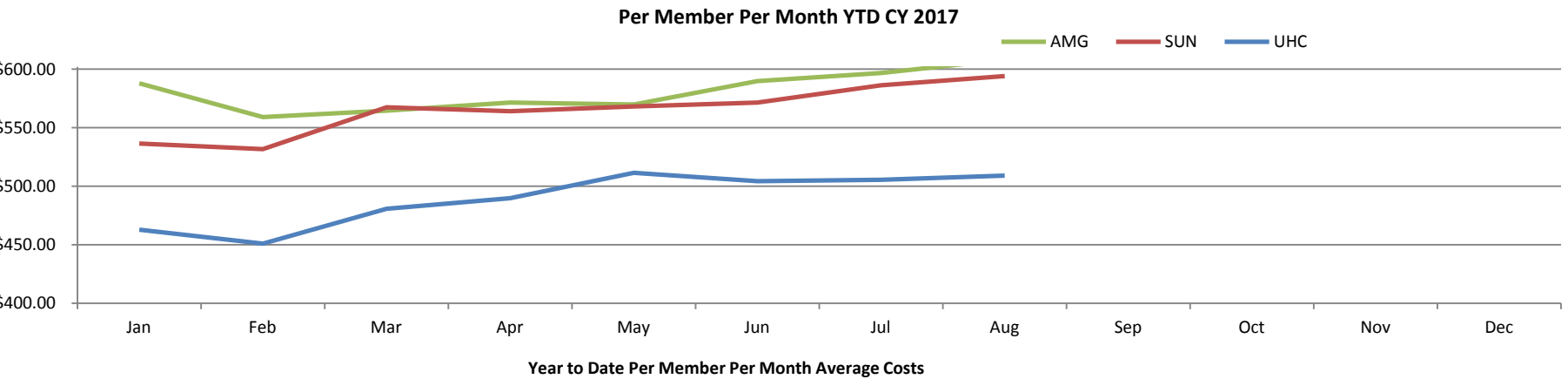
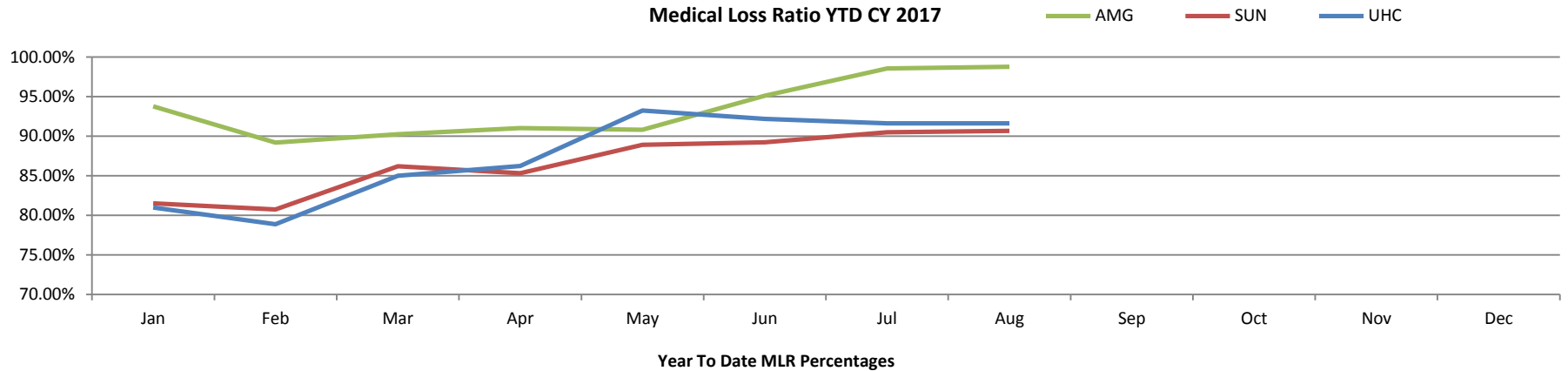
**Long Term Care includes Nursing Facilities, Money Follows the Person Frail Elderly and Physically Disabled, and the Physically Disabled and Frail Elderly Waivers

Provider Network

KanCare MCO	# of Unique Providers as of 12/31/16	# of Unique Providers as of 3/31/17	# of Unique Providers as of 6/30/17	# of Unique Providers as of 9/30/17
Amerigroup	16,886	16,498/23,758*	25,904*	25,396*
Sunflower	21,391	22,313/30,992*	31,780*	31,506*
UHC	23,778	23,777/39,881*	32,216*	30,610*

*Reflects the revised provider pull to reflect the number of unique providers per name, NPI and city .

Medical Loss Ratio & Per Member Per Month



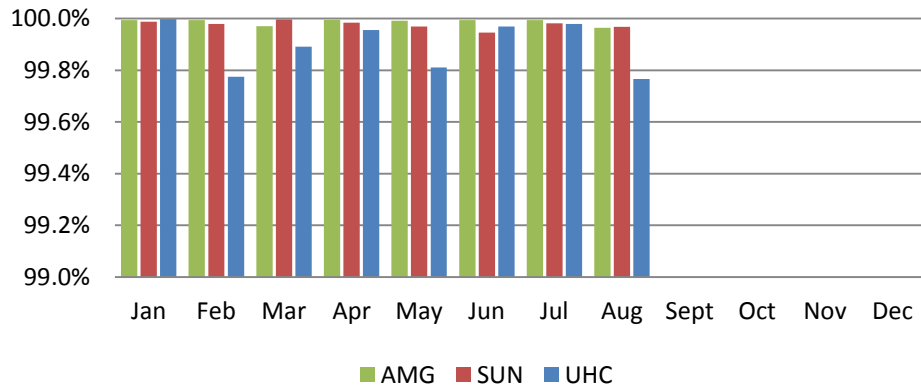
PMPM= Current Expenditures/ Current Members/12 months

MLR=Total Claims Paid/ Capitations

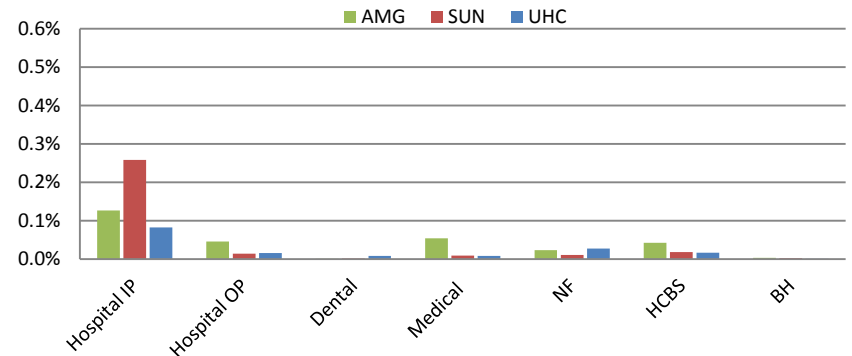


Claims Data

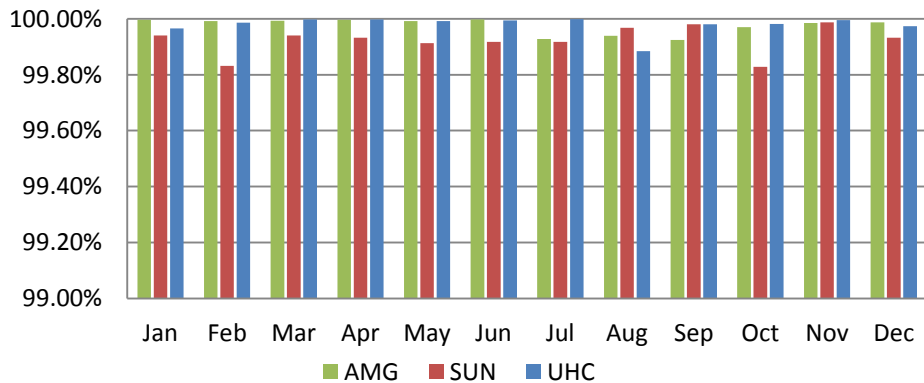
% Clean Claims Processed within 30 days CY 2017



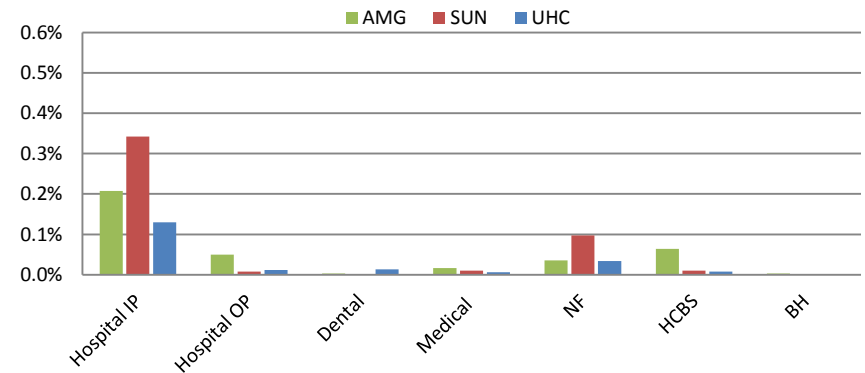
% YTD Claims Adjusted. >3 times Jan- Aug CY17



% Clean Claims Processed Within 30 days CY 2016

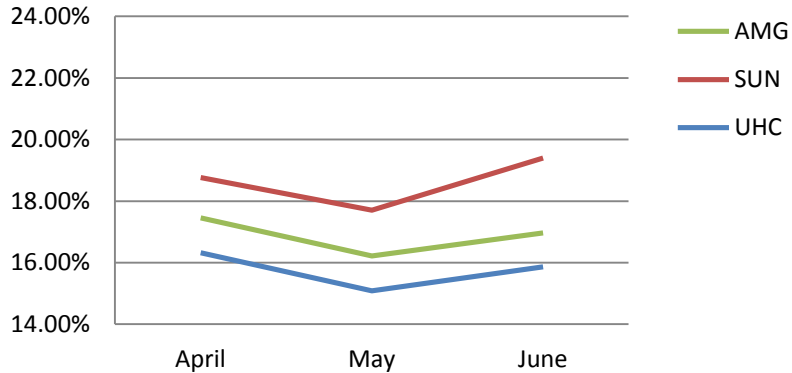


% YTD Claims Adjusted. >3 times Jan- Dec CY16

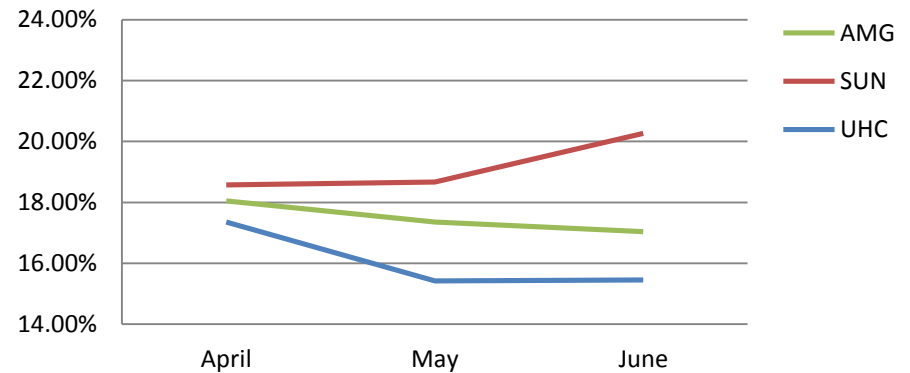


Claims Data

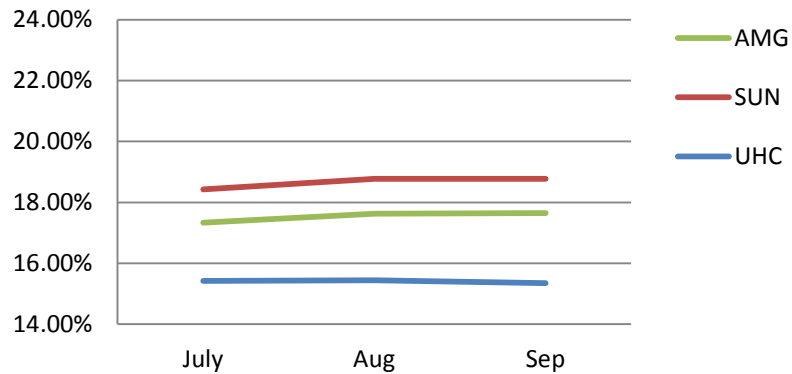
% Denied Claims by Month Q2 2016



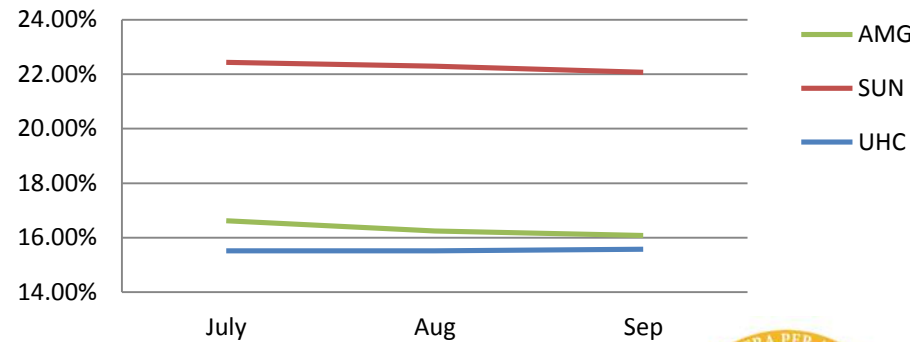
% Denied Claims by Month Q2 2017



% Denied Claims by Month Q3 2016



% Denied Claims by Month Q3 2017



Value Added Services - January- September 2017

Amerigroup	Members YTD	Total Units YTD	Total Value YTD	Sunflower	Members YTD	Total Units YTD	Total Value YTD	United	Members YTD	Total Units YTD	Total Value YTD
Adult Dental Care	2,389	2,610	\$351,112	CentAccount debit card	59,644	59,644	\$637,597	Rewards for Preventive Visits & Health Actions	32,888	32,888	\$97,825
Member Incentive Program	7,675	16,594	\$318,180	Dental visits for adults	3,728	5,658	\$271,880	Adult Dental Services	1,615	1,615	\$92,633
Mail Order OTC	1,212	6,018	\$109,453	Pharmacy Consultation	4,877	7,426	\$184,354	Baby Blocks Program and Rewards	591	591	\$70,920
Healthy Families Program	30	30	\$56,250	Smoking cessation program	480	480	\$115,200	Adult Briefs	788	788	\$69,946
Pest Control	110	126	\$17,940	Healthy Solutions for Life - Disease Management	37,408	37,408	\$74,816	Home Helper Catalog Supplies	2,194	2,194	\$63,785
Member Transportation to Community Locations	57	252	\$14,067	Start Smart	2,045	2,045	\$57,567	Additional Vision Services	1,522	1,542	\$98,487
Additional Respite Care for DD Waiver Population	17	236	\$11,992	Member Connections Home Visiting Program	1,702	1,702	\$42,999	Adult Dentures	96	96	\$54,818
Boys and Girls Club Membership	133	133	\$6,650	Respite care	65	4,630	\$15,048	Membership to Youth Organizations	558	558	\$27,900
Smoking Cessation Program	34	36	\$5,619	Lodging for specialty and inpatient care	33	185	\$14,985	Weight Watchers - Free Classes	166	166	\$19,754
Air purifier with a permanent filter	24	24	\$2,368	Farmers Market Vouchers	1,365	1,365	\$13,650	Additional Podiatry Visits	136	136	\$15,666
Weight Watcher Vouchers	26	26	\$959	SafeLink®/Connections Plus cell phones	197	197	\$9,423	Kids Health	12,000	12,000	\$7,000
Additional Personal Care Services for IDD Wavier Population	2	144	\$380	Frail & Elderly incontinence supplies	279	1,411	\$9,322	Pest Control	26	26	\$6300
Respite Care for FE Waiver Population	1	36	\$108	Community Programs for Healthy Children: Boys & Girls Clubs	459	459	\$6,885	Medications Calendar	1,661	1,661	\$5,064
				Healthy Solutions for Life - Weight Management Program	833	833	\$1,666	Follow-Up After Behavioral Health Hospitalization - \$25 Reward	17	17	\$425
				Meals for specialty and inpatient care	15	48	\$1,200	A is for Asthma	819	819	\$410
				Hospital companion	5	272	\$884	Sesame Street - Food For Thought	10	10	\$350
								Adults Parks and Rec Catalog	5	5	\$250
2017 YTD Grand Total	11,856	27,661	\$895,078	2017 YTD Grand Total	113,235	123,764	\$1,457,699	2017 YTD Grand Total	54,688	54,708	\$585,025
2017 KanCare Totals	179,779	206,133	\$2,937,802								



In Lieu of Services

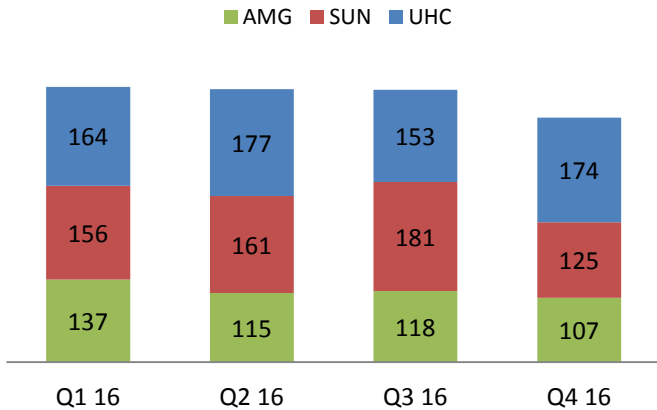
Amerigroup	Unduplicated Members	Value of Services Avoided	Sunflower	Unduplicated Members	Value of Services Avoided	United	Unduplicated Members	Value of Services Avoided
Additional Medicaid covered services, beyond existing limitations, including personal care services, sleep cycle support, home modifications, equipment and assisted services ... in lieu of members needing to be admitted to an acute care hospital or nursing facility	131	\$2,880,867	Additional personal care services, beyond existing waiver limitations ... in lieu of members needing to be admitted to a nursing facility	142	\$2,085,078	Additional personal care services, personal care services, beyond existing waiver limitation, sleep cycle support, and home delivered meals ... in lieu of members needing to be admitted to a nursing facility	485	\$1,143,997
Non-Covered services including private nurse, PET scans, CPAP equipment and sleep cycle support in lieu of members needing to access ICU, acute hospital, or nursing facility services	176	\$3,885,826	Non-Covered services covering a wide range of equipment, orthotics, testing, physician services and outpatient surgery in lieu of members needing to access acute hospital, home health, or more intensive physical or behavioral health services	68	\$176,049	Non-Covered services Sleep studies, testing, and home health in lieu of members needing to access to acute hospital, or nursing facility services	75	\$542,000
Totals	307	\$6,766,693	Totals	210	\$2,261,127	Totals	560	\$1,685,997

KANCARE TOTAL	(January - September 2017)
Members	1,077
Value of Services Avoided	\$10,713,817

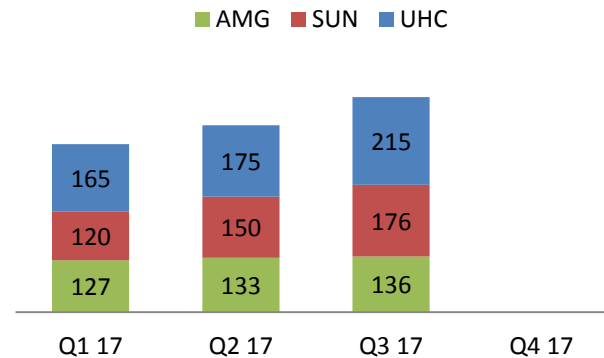


Grievances and Appeals - Members

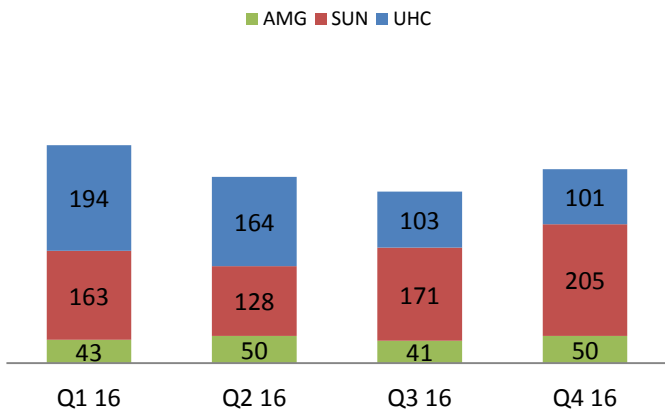
Member Grievances 2016



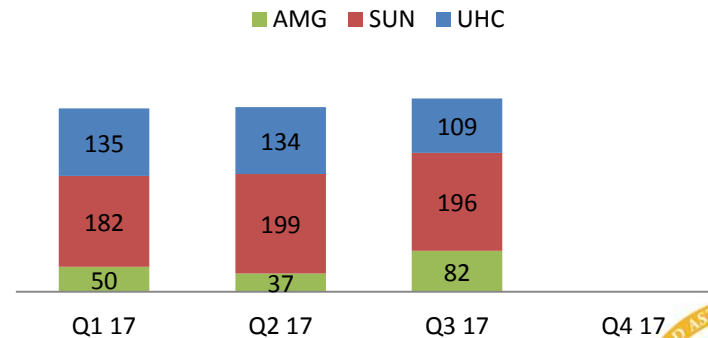
Member Grievances 2017



Member Appeals 2016

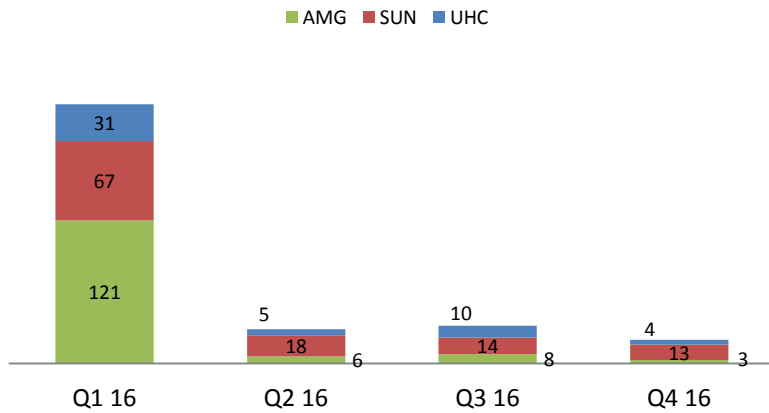


Member Appeals 2017



State Fair Hearing- Members

Member State Fair Hearings 2016



Member State Fair Hearings 2017

