

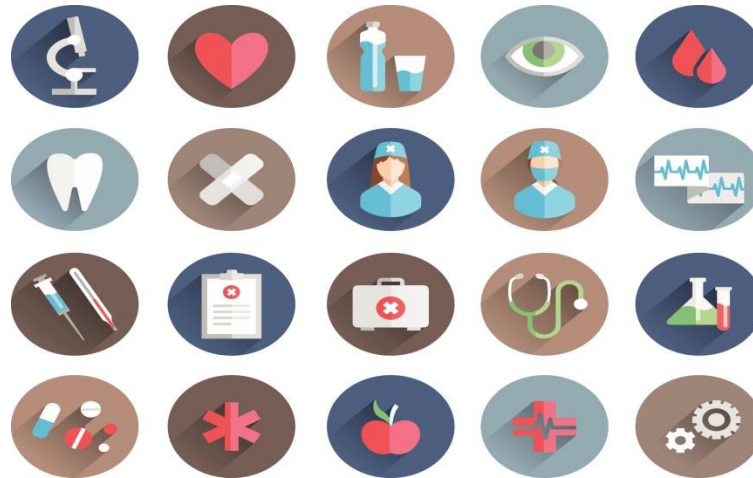
PACE



Programs of All-Inclusive
Care for the Elderly

What is PACE?

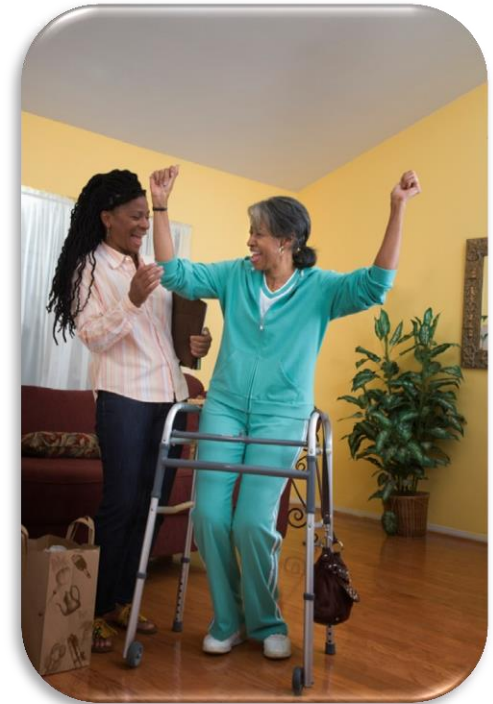
- PACE is a Medicare **and** Medicaid program designed to promote the provision of quality, comprehensive medical and social services for the elderly.



- The primary care physicians and interdisciplinary team of professionals provide and coordinate all services for you, providing a “one stop shopping” for your needs.

Who can get PACE?

1. Be 55 years old or older
2. Need a nursing home-level of care
 - a. This “functional assessment will be one by the local ADRC.
3. Be able to live safely in the community with help of PACE services
4. Live in the service area of a PACE organization
 - [23 counties in Kansas \(as of February 2017\)](#)



How does PACE work?

PACE organizations provide care and services:

1. In the home
2. In the community
3. At the PACE centers



- They have contracts with many specialists and other providers in the community to make sure each individual gets the care they need.
- Many PACE participants get most of their care from staff employed by the PACE organization in the PACE center.

Who provides the services?



- With PACE, the focus is on the individual.
- A team of professional and paraprofessional staff assesses the participant's needs, develops a plan of care with the individual and his/her caregiver, and delivers all services (including hospital and other acute care and when necessary, nursing home services).

The PACE provider coordinate and provides all needed preventative, primary, acute and long-term care services, so that older Kansans who need nursing home level of care can continue living in the community.

Who provides the services?

- The interdisciplinary team works together to ensure that the comprehensive medical and social needs of each participant are met.



- The consumer and their family will play an active role as the team develops and updates the plan of care and goals in the program.

Who provides the services?

Minimally, each Interdisciplinary Provider Team (IDT) is composed of a:

- primary care physician
- nurse
- social worker
- physical therapist
- occupational therapist
- recreational therapist/activity coordinator
- dietitian
- PACE center supervisor
- Home care liaison
- personal care attendants
- transportation \ driver



Similar to MCOs & Other PPO Insurance Plans

- When you enroll in PACE, you may be required to use a PACE-preferred doctor.



What's a PPO:

- Preferred Provider Organization (PPO)- A type of health plan that contracts with medical providers, such as hospitals and doctors, to create a network of participating providers.
- You pay less if you use providers that belong to the plan's network.

What Services are Provided?



- The PACE service package must include **All** Medicaid and Medicare covered services.

- If your health care team decides you need care and services that Medicare and Medicaid does NOT cover, ***PACE may still cover them.***

Here are some of the services PACE covers:

PACE benefits include, but are not limited to, all Medicaid and Medicare covered services:

- | | |
|---|---|
| 1. Adult Day Care <ul style="list-style-type: none">• including doctor• nursing services | 13. Dentistry |
| 2. Nursing home care | 14. Meals |
| 3. Home care | 15. Nutritional Counseling |
| 4. Hospital care | 16. Social Services <ul style="list-style-type: none">• caregiver training• support groups• respite care |
| 5. Medical specialty services | 17. Social Work Counseling |
| 6. Emergency services | 18. Transportation to the PACE center <ul style="list-style-type: none">• for activities• for medical appointments• For medically necessity• For some medical appointments |
| 7. Laboratory/x-ray services | |
| 8. Prescription drugs | |
| 9. Physical therapy | |
| 10. Occupational therapy | |
| 11. Recreational therapy | |
| 12. Preventive Care | |



What You Pay for PACE Depends on Your Financial Situation

PACE uses Medicare *and* Medicaid funds to cover all medically-necessary care and services.

1. You can have Medicare only.
2. You can have Medicaid only.
3. You can be dual eligible; have both Medicare & Medicaid.
4. You can also pay for PACE privately, if they do not have Medicare/Medicaid.



Financial Requirements



Individuals who have Medicaid:

1. You will either have a small monthly premium or pay nothing for the long-term care portion of the PACE benefit.
2. You will pay nothing for Medicare Part D drug.

Individuals who have Medicare ONLY:

1. You will pay a monthly premium to cover the long-term care portion of the PACE benefit.
 2. You will pay a monthly premium for Medicare Part D drugs.
- Participants also are responsible for their Medicare Part B premium.
 - However, in PACE there is never a deductible or co-payment for any drug, service or care approved by the PACE team.

How can I get more information about the PACE Program?

For additional information about the PACE program please contact the PACE Program Manager Carrie Proffitt:

- Email: Carrie.A.Proffitt@ks.gov
- Phone: (785) 296-8288
- Fax: (785) 296-0256

Mail:

- Kansas Department for Aging and Disability Services
- New England Building
- 503 S. Kansas Ave.
- Topeka, KS 66603-3404

PACE Organizations & Counties

Via Christi HOPE

Sedgwick

Call: 316-858-1111

Midland

Douglas
Jackson
Jefferson
Leavenworth
Lyon
Marshall
Nemaha
Osage
Pottawatomie
Shawnee
Wabaunsee
Wyandotte

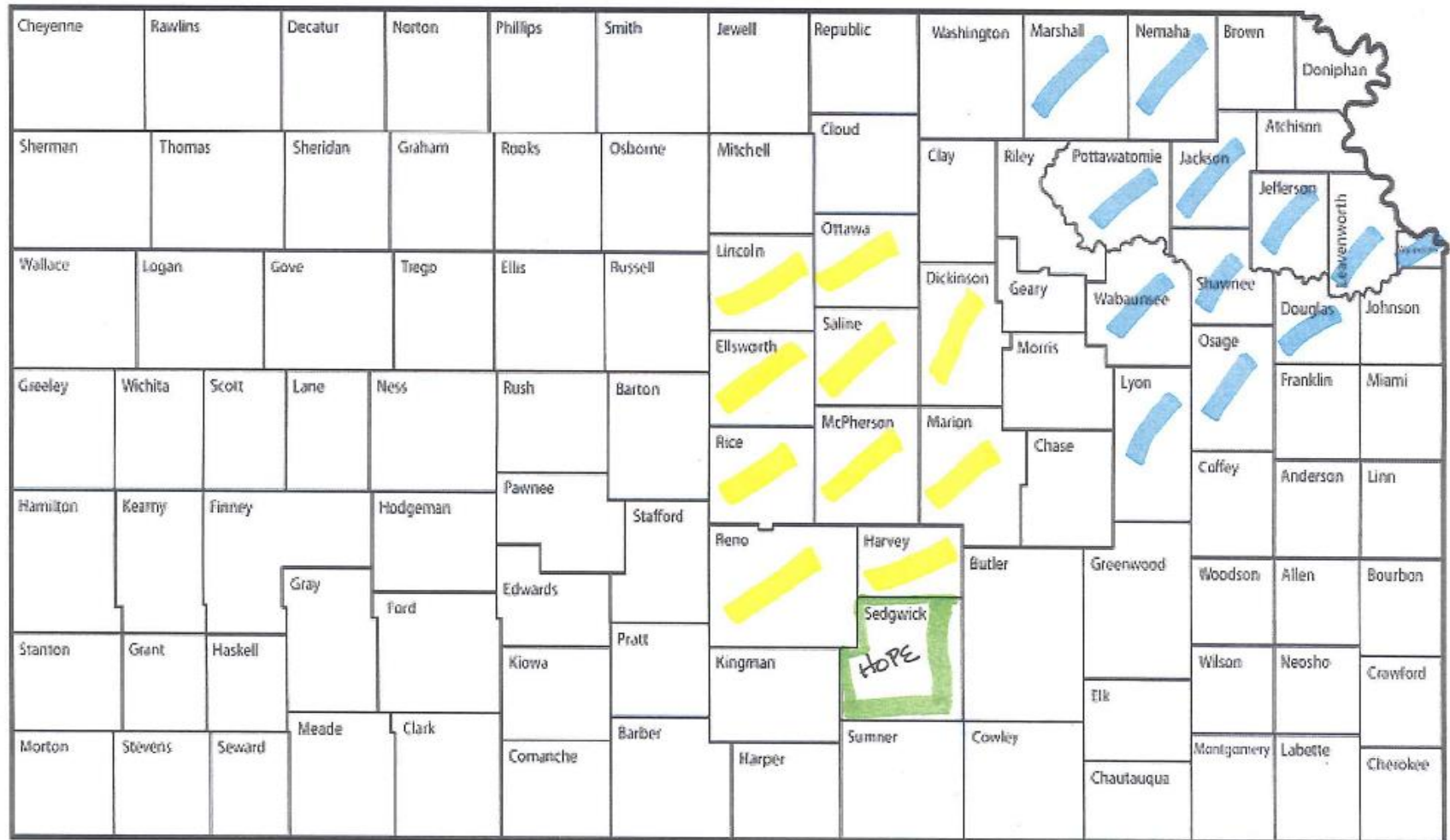
Call: 785-232-2044

Bluestem

Dickinson
Ellsworth
Harvey
Lincoln
Marion
McPherson
Ottawa
Reno
Rice
Saline

Call: 844-588-7223

PACE Organizations & Counties



Midland - Angel Nott Buze anott@midland.org
 Hope - Jennifer. Campbell@via-christi.org

Bluestem - Emilie Rains-
emilie@Bluestemks.org